

114655 RETAIL API – FREE STOCK ENDPOINT – INCLUDE WHOLESALE WAREHOUSES

1 INTRODUCTION

The Apparel21 *Retail API* has been updated so that it is possible to expose more stock information for wholesale warehouses.

The *Retail API > Free Stock* endpoint has been updated to have the option to also return warehouses that are NOT marked as a retail store.

2 BENEFITS

- ✓ Exposing stock from more warehouses increases the potential to utilise more stock in the business

3 ASSUMPTIONS/LIMITATIONS

- Warehouses will be calculated using “POS Free” formula – if this is NOT the same as the formula used for the Products or Stock Changes endpoint they different stock information will be provided by the different look ups – this feature should only be used if the > Generic Interface Translation > AP21_WEB_STORE_STOCK information for the warehouse is the same as Customise Stock Enquiry > POS Free formula.
- Store numbers may need to be entered on wholesale warehouses if websites can’t accept a blank store number against records

4 RELATED DEVELOPMENTS

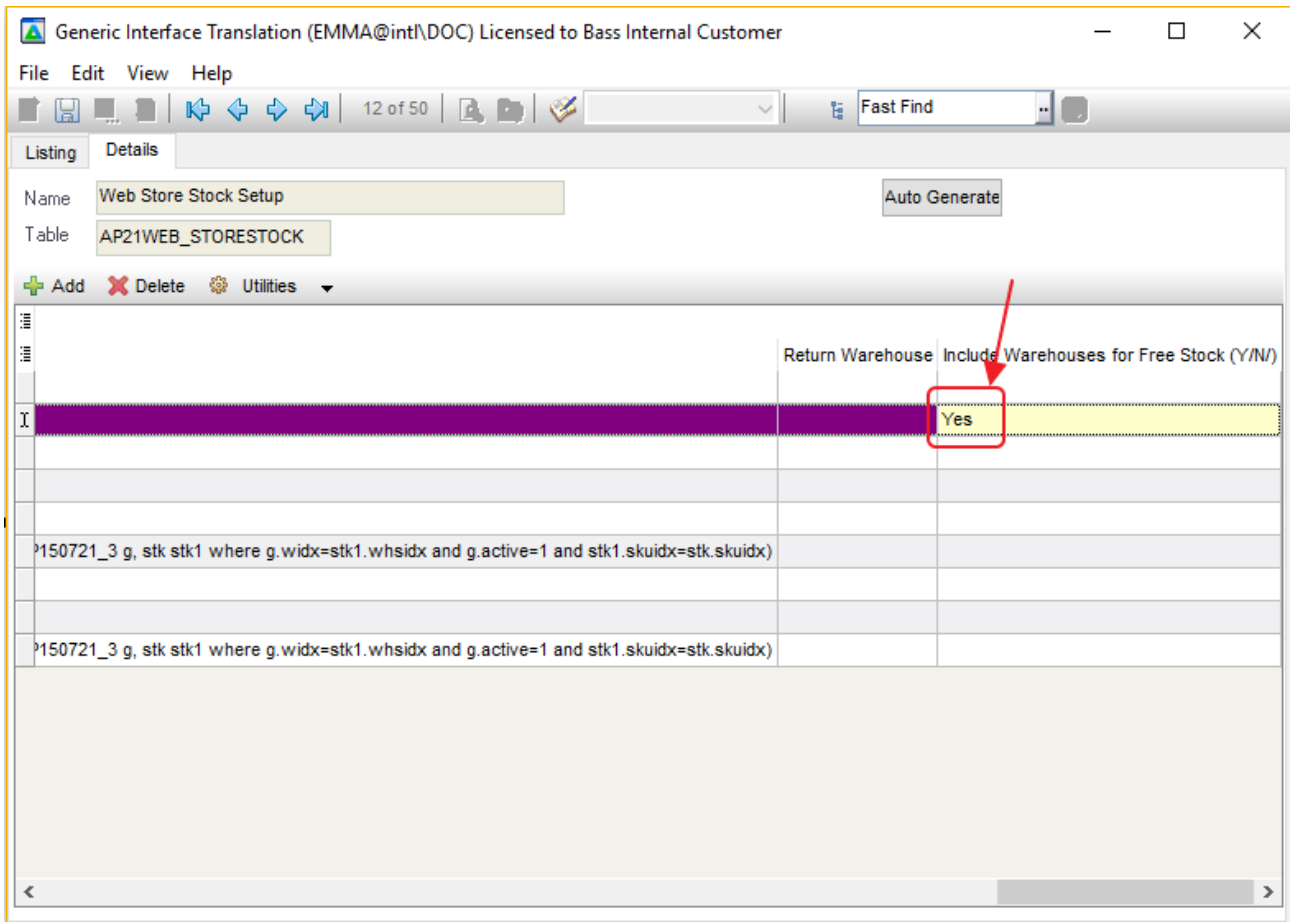
In version 2019.2, Apparel21 Ship From Store features have been updated to allow for more than one wholesale warehouse to be considered for order fulfillment. See job 114673 for more information.

5 SETUP

5.1 GENERIC INTERFACE TRANSLATION

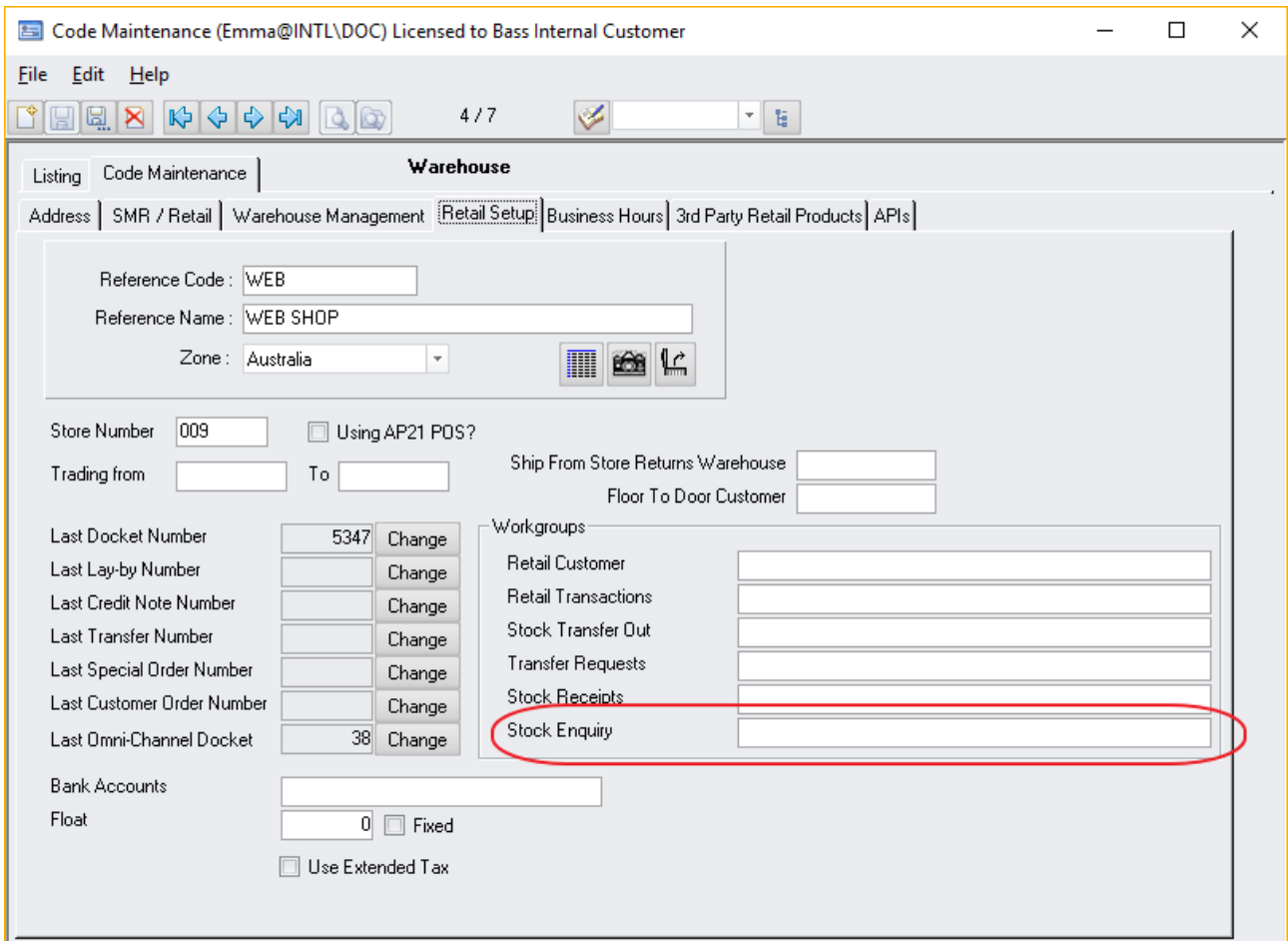
To activate this feature, the *Generic Interface Translation* screen must be used.

1. Select the *AP21WEBSTORE_STOCK*
2. Locate the web store in the list of web stores
3. Adjust the column *Include Warehouses for Free Stock* – set this to Yes



5.2 CODE MAINTENANCE

The *Free Stock* endpoint returns all stores (and now warehouses) that the web store has security to view. This security is configured in *Code Maintenance* against the web store.

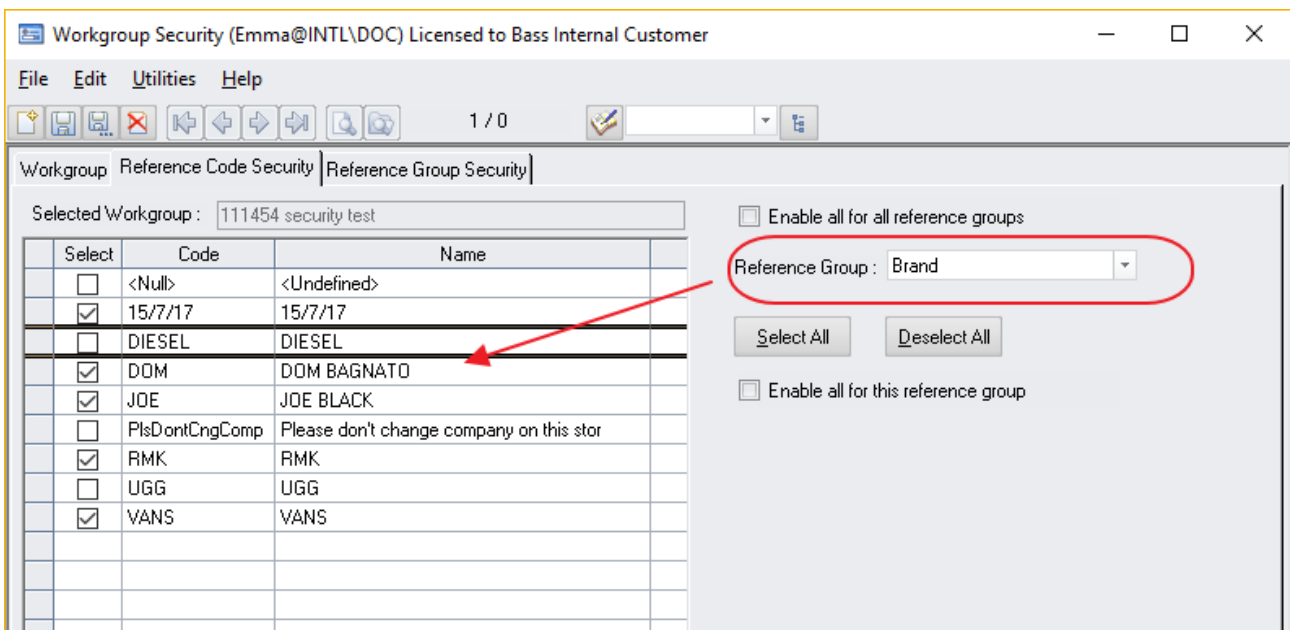


If left blank, ALL warehouses with stock will be included in the response.

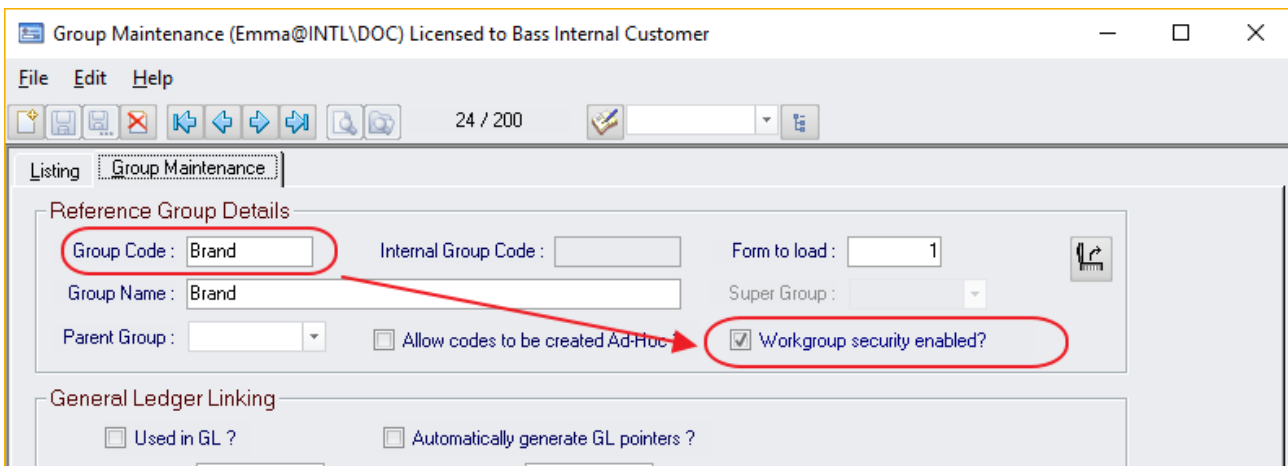
5.3 GROUP MAINTENANCE / WORKGROUP SECURITY

To configure security workgroups, this is done in *Workgroup Security*.

Against each workgroup, nominate which reference codes they can see. This is only possible for security controlled reference groups.

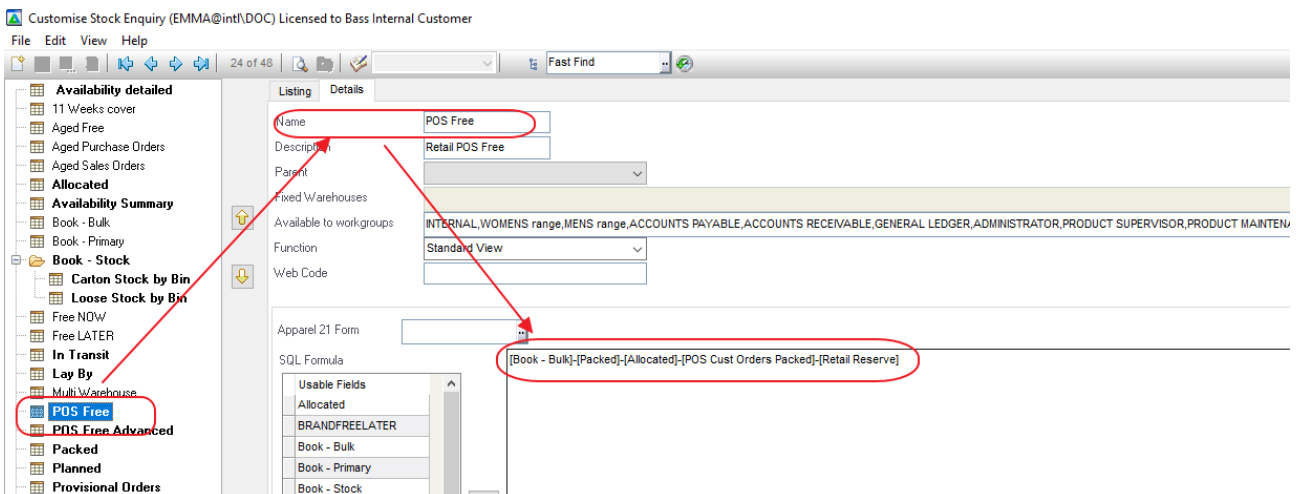


Only workgroup security enabled reference groups that are attached to the *Warehouse* object in *Object Maintenance* will filter the returned stores / warehouses list.



5.4 CUSTOMISE STOCK ENQUIRY

The *POS Free* formula is used to identify the free stock value to return when using the *Free Stock* endpoint. This formula configuration can be viewed / adjusted in *Customise Stock Enquiry*.



6 DESCRIPTION / USAGE

The request process and parameters for the *Free Stock* endpoint have NOT changed. It is only the response that now includes additional warehouses (if configured to do so).

GET http://v-devserver2012/IntIDocRetailAPI/Freestock/style/5481?countryCode=AU

Params Authorization Headers (9) Body Pre-request Script Tests

Query Params

KEY	VALUE	DESCRIPTION
<input checked="" type="checkbox"/> countryCode	AU	
Key	Value	Description

Status: 200 OK Time: 2451 ms Size: 5.83 KB

Body Cookies Headers (10) Test Results

Pretty Raw Preview XML

```

1 <Style xmlns:xsd="http://www.w3.org/2001/XMLSchema" xmlns:xsi="http://www.w3.org/2001/XMLSchema-instance" Name="Sleeveless Onesie Suit" StyleIdx="5481">
2   <Clr Name="Tan" ClrIdx="6121">
3     <Sku Name="6" SkuIdx="12422">
4       <Store Name="Chatswood Westfield" StoreId="9041" StoreNumber="005" FreeStock="1" />
5       <Store Name="Bondi Westfield" StoreId="9021" StoreNumber="004" FreeStock="1" />
6       <Store Name="WEB SHOP " StoreId="9441" StoreNumber="009" FreeStock="1" />
7       <Store Name="Northland" StoreId="10584" StoreNumber="200" FreeStock="1" />
8       <Store Name="Southgate" StoreId="10343" StoreNumber="159" FreeStock="95" />
9       <Store Name="Richmond Store" StoreId="12723" StoreNumber="007" FreeStock="1" />
10      <Store Name="Melbourne " StoreId="9001" StoreNumber="003" FreeStock="2" />
11    </Sku>
12    <Sku Name="8" SkuIdx="12423">
13      <Store Name="Bondi Westfield" StoreId="9021" StoreNumber="004" FreeStock="1" />
14      <Store Name="WEB SHOP " StoreId="9441" StoreNumber="009" FreeStock="1" />
15      <Store Name="Melbourne " StoreId="9001" StoreNumber="003" FreeStock="1" />
16      <Store Name="Chadstone" StoreId="8981" StoreNumber="811" FreeStock="1" />
17      <Store Name="Northland" StoreId="10584" StoreNumber="200" FreeStock="1" />
18      <Store Name="Southgate" StoreId="10343" StoreNumber="159" FreeStock="2" />
19      <Store Name="Chatswood Westfield" StoreId="9041" StoreNumber="005" FreeStock="1" />
20      <Store Name="Richmond Store" StoreId="12723" StoreNumber="007" FreeStock="1" />
21    </Sku>
22    <Sku Name="10" SkuIdx="12424">
23      <Store Name="Southgate" StoreId="10343" StoreNumber="159" FreeStock="1" />
24      <Store Name="Chatswood Westfield" StoreId="9041" StoreNumber="005" FreeStock="1" />
25      <Store Name="Melbourne " StoreId="9001" StoreNumber="003" FreeStock="1" />
26      <Store Name="Northland" StoreId="10584" StoreNumber="200" FreeStock="1" />
27      <Store Name="WEB SHOP " StoreId="9441" StoreNumber="009" FreeStock="1" />
28      <Store Name="Bondi Westfield" StoreId="9021" StoreNumber="004" FreeStock="1" />
29      <Store Name="Richmond Store" StoreId="12723" StoreNumber="007" FreeStock="1" />
30      <Store Name="Chadstone" StoreId="8981" StoreNumber="811" FreeStock="1" />
31    </Sku>
32    <Sku Name="12" SkuIdx="12425">
33      <Store Name="WEB SHOP " StoreId="9441" StoreNumber="009" FreeStock="1" />
34      <Store Name="Chadstone" StoreId="8981" StoreNumber="811" FreeStock="1" />

```

Warehouses now also included in this response if set up