

114795 SUB PRODUCTION ORDER AUTOMATION

1 INTRODUCTION

The Apparel21 production system includes the ability to generate sub-production orders when a production order contains a component that is 'produced'.

The creation of sub-production orders has been updated to increase the amount of information that is automatically filled in on the new orders; reducing the amount of manual effort required to update these orders once they are created. The following things have changed:

1. Warehouse on sub production order set to Component issue warehouse of parent order
2. Component issue warehouse on sub production order set to issue warehouse of parent
3. Mandatory refs on parent order copied to sub production order
4. Work tickets for sub production order can be automatically generated / print when parent order tickets are printed
5. Dates on sub production order stages automatically calculated based on parent order, production lead times of raw material and "working" days
6. Automatically default production order BOM on new order to be the "default production BOM"

2 BENEFITS

- ✓ Less manual updates required on the sub-production orders after they are created

3 ASSUMPTIONS/LIMITATIONS

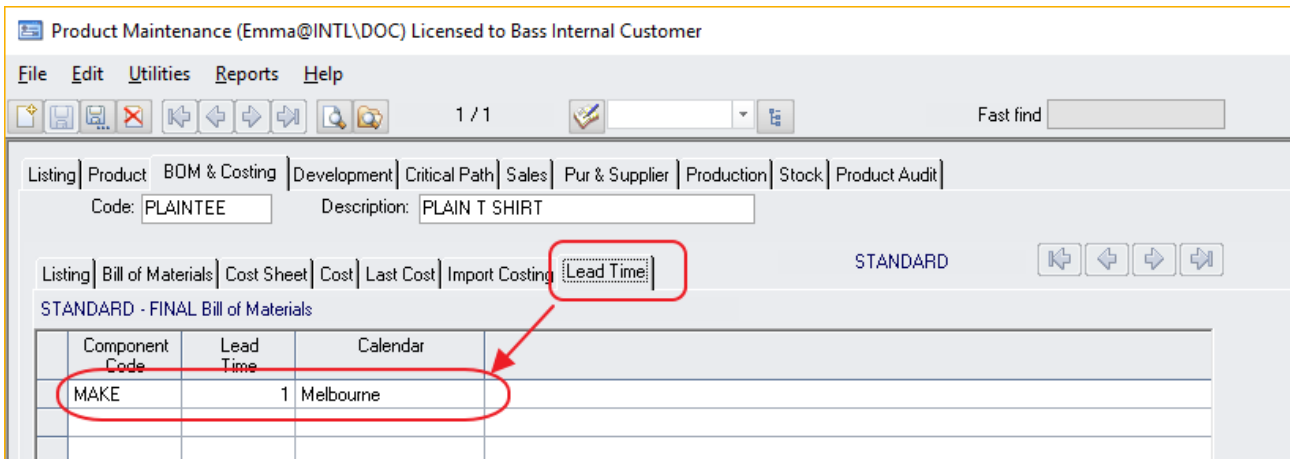
- If configuring lead times, calendars must also be maintained. If no calendar assigned to the BOM, dates will NOT be automatically calculated.

4 SETUP

There is no additional setup to activate these features. These changes affect ALL new sub production orders that are created.

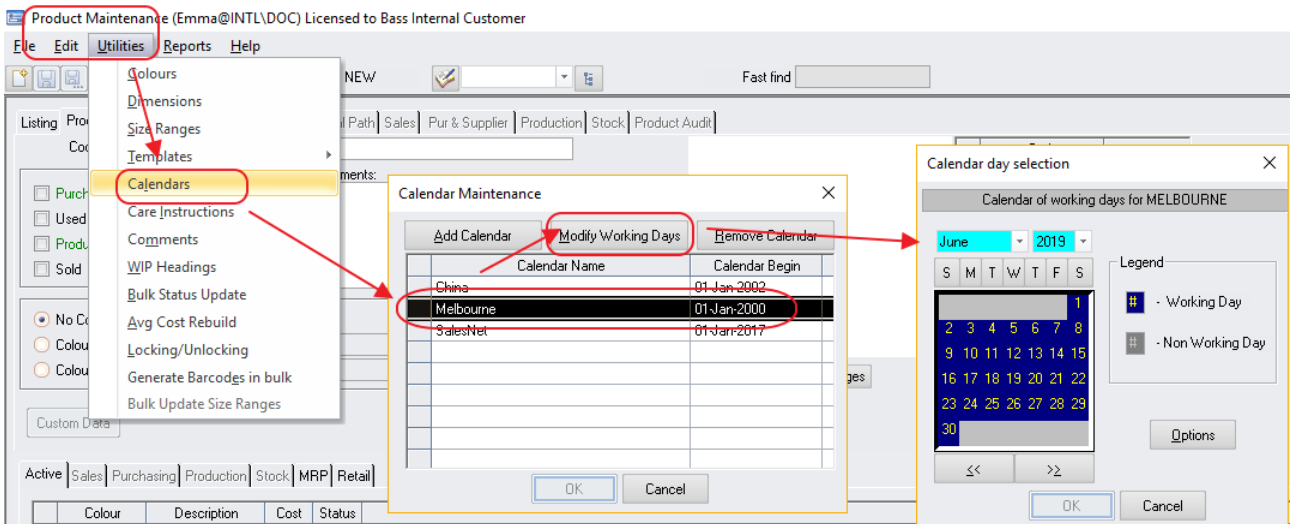
4.1 LEAD TIMES

The number of days that each production stage takes and the working days calendar must be maintained against the different "stages" of the "produced" raw material. These days and calendars are used to determine the dates that will be applied automatically to the generated production order.



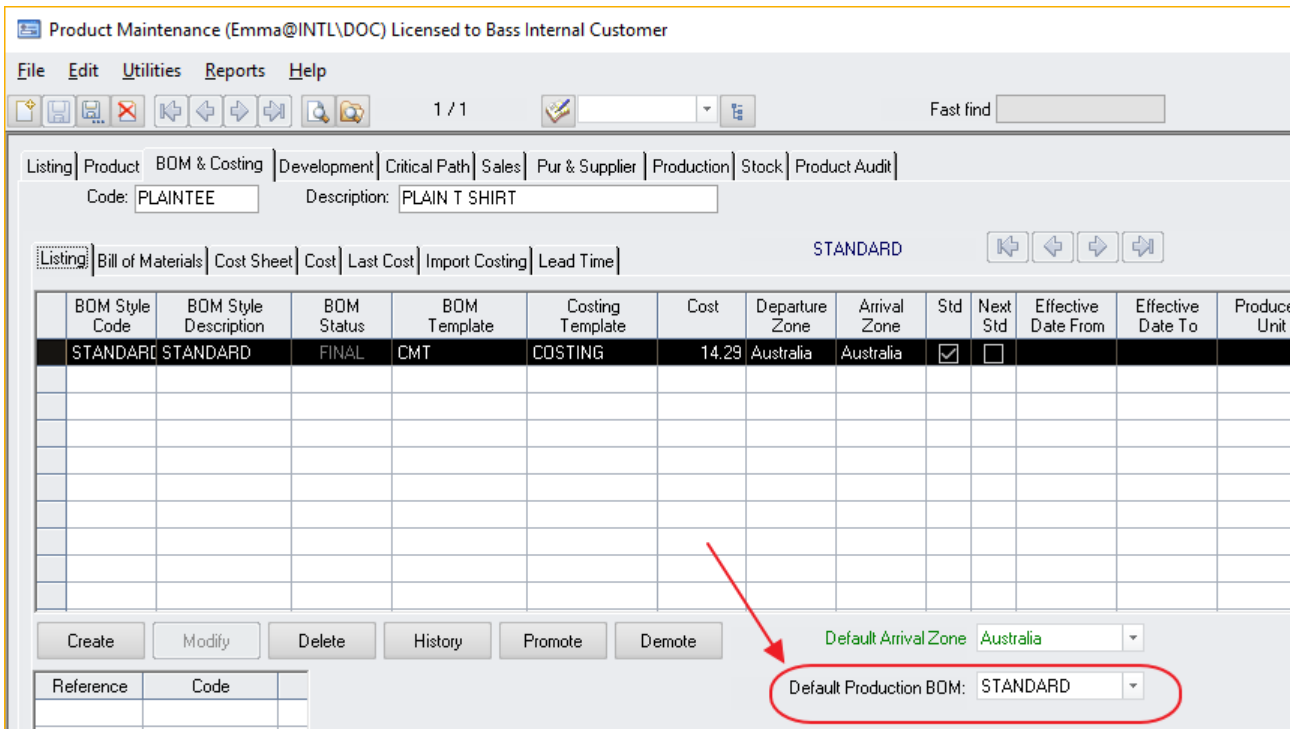
4.2 WORKING DAYS CALENDARS

The working days calendars are maintained via *Product Maintenance > Utilities > Calendars* menu entry. These are used when automatically calculating dates to apply to the new sub-production order.



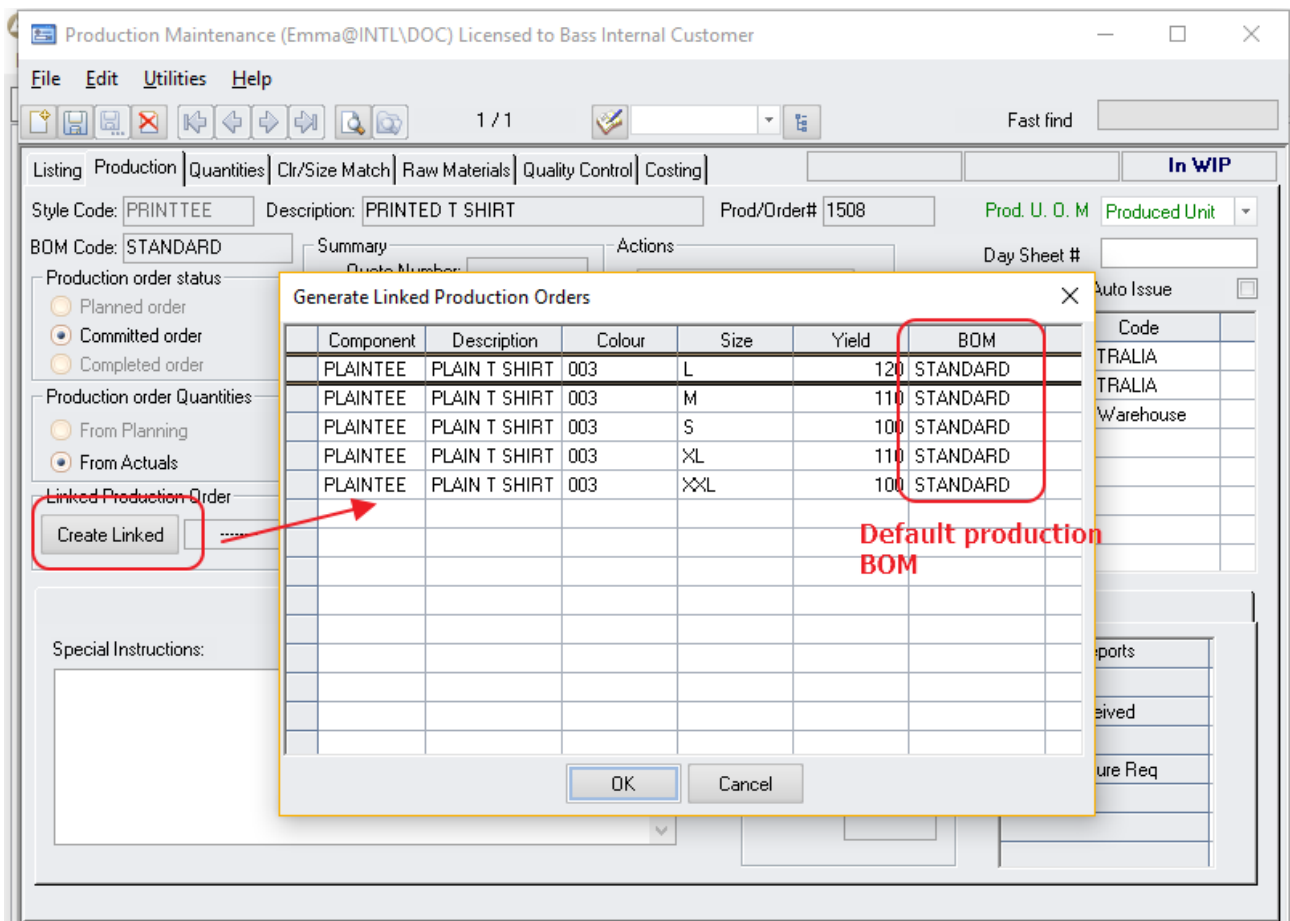
4.3 DEFAULT PRODUCTION BOM

The *Default production BOM* is configured on the “produced” raw material under the *Listing* tab of the *BOM & Costing* tab. This will be the default BOM used for the new order (but can be changed when create).



5 DESCRIPTION / USAGE

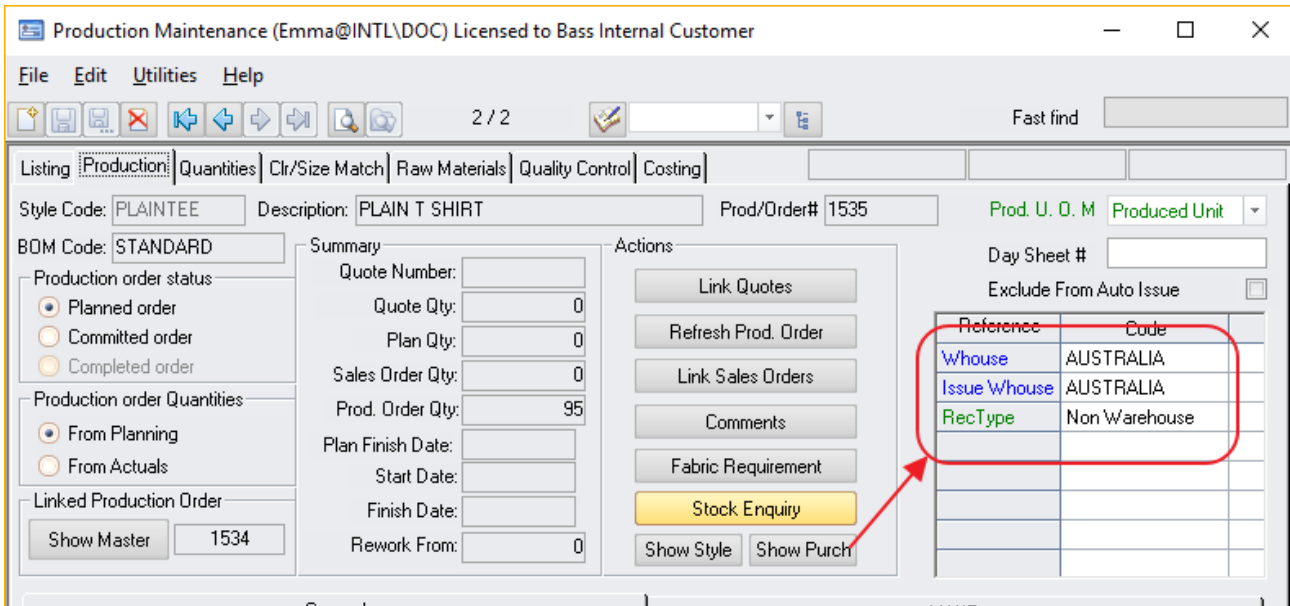
Sub production orders are generated via *Production Maintenance* using the *Create Linked* button on the *Production* tab.



The BOM for the sub production orders will now default to the *Default production BOM* of the raw material that will be produced.

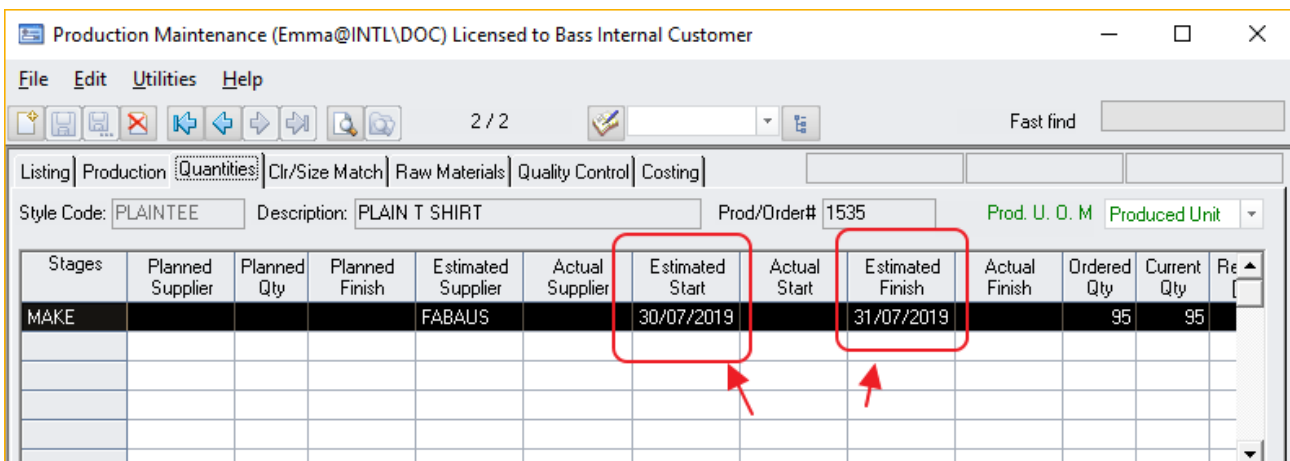
The references on the sub production order will be automatically updated.

| | |
|--------------|---|
| Whouse | Copied from <i>Issue Whouse</i> of parent |
| Issue Whouse | Copied from <i>Issue Whouse</i> of parent |
| References | Copied from parent |



The *Estimated Start Date* and *Estimated Finish Date* of the sub production order stages will be automatically calculated.

| | Estimated Finish Date | Estimated Start Date |
|--------------|---|---|
| Last stage | Day before estimated start date of parent order stage that this raw material is "used" in | Estimated finish date less lead time days for stage (from Product Maintenance) – will skip non-working days from calendar |
| Other stages | Copied from Estimated finish date of previous stage | |



The *Work Ticket Print* screen has been modified to allow for the sub production order work tickets to be automatically printed at the same time as the parent order.

